

H I D E

FOR THE
**HOME
OWNER**

HOME OWNERS MANUAL

PROUDLY MANUFACTURED BY:
SKIMMER LIDS
PTY LTD



THANK YOU

FOR CHOOSING A HIDE PRODUCT

HIDE products are designed for durability and safety. However, there are a few important points to remember when:

- having a HIDE product installed; and
- using and maintaining a HIDE product.

This manual explains the best practise to:

- ensure your product is installed correctly;
- ensure safe HIDE use practises;
- ensure correct care and maintenance of your HIDE product.

Remember - misuse, unsafe practises or incorrect procedures may void the HIDE warranty.

Please read this manual in conjunction with the HIDE warranty document enclosed within, and store both in a safe place for future reference.

If you have any queries, please refer to the detailed information on our website or contact us via your preferred method.

P: 07 3807 2551

E: admin@skimmerlids.com.au



@hideskimmerlids

WWW.SKIMMERLIDS.COM.AU

SAFETY FIRST

BE CHILD SAFE!



KEEP THEM SEPARATED

NEVER leave the HIDE Safety Key in the Lid for any reason.

The key is not specified or designed to remain in the lid.



STORE SAFETY KEY SECURELY

ALWAYS store the HIDE Safety Key **out of reach of children**, in a secure, childproof location. Return to safe storage after use.



SAFE ACCESS

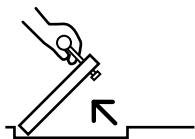
DO NOT leave nearby children unattended while the HIDE lid is removed. Actively discourage children from playing in or near the HIDE access area.



BAN LITTLE FINGERS

NEVER allow children to operate the HIDE Safety Key or the lid itself. This is a job for adults!

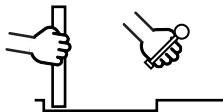
OPENING A HIDE LID



STEP 1

Insert the Safety Key and turn to 90° so it locks onto the back of the lid.

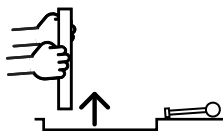
Pull the key upwards to lift the lid edge to a 90° position.



STEP 2

Hold the raised edge of the HIDE lid firmly in one hand.

Release the Safety Key and set aside.

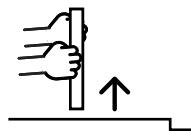


STEP 3

Grip the HIDE lid with your other hand, and lift with both hands until completely free.

Gently set down the lid to the side, away from the opening.

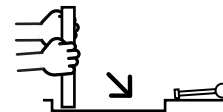
CLOSING A HIDE LID



STEP 1

Set the Safety Key within easy reach.

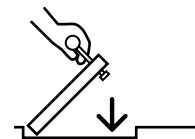
Using both hands, grip the HIDE lid on either side and raise upwards.



STEP 2

Lower the HIDE lid at a 90° position, so the side without the key slot is inserted first.

Hold the HIDE lid in position with one hand at the side of the lid.



STEP 3

Insert the Safety Key while holding the HIDE lid in position.

Move your supporting hand away and gently lower the raised edge **using the Safety Key**.

MAINTAIN SAFE ACCESS



TURN OFF FIRST

NEVER open a skimmer with the pump running.



WAIT TO ACCESS

REMOVE the lid *completely* before accessing the uncovered recess.



NO WEIGHT BEARING

DO NOT carry the lid with the Safety Key. This may damage the key.



CHILD SAFETY

DO NOT leave nearby children unattended while the lid is removed.



PROTECT FINGERS

ENSURE fingers/toes are not under the lid when lowering.



SAFE STORAGE

ALWAYS return the Safety Key to a child safe, secure stored location.

MAINTAIN SAFE ACCESS

INSTALLATION

ALWAYS USE A LICENSED CONTRACTOR!

Skimmer Lids Pty Limited is not an installer of HIDE products.

A Skimmer Lids Pty Ltd warranty applies only if the HIDE product has been professionally installed by a licensed, and suitably experienced contractor eg a licensed tiler.

Please be mindful that Skimmer Lids Pty Ltd is not accountable for:

- installation faults;
- DIY installation, or installation by an unapproved person/s;
- incorrect use of adhesives;
- damage caused by incorrect installation; and/or
- failure to comply with the Contractor Installation Instructions enclosed in the HIDE kit (or accessible online).

Skimmer Lids Pty Ltd recommends that you ask your licensed contractor to read the HIDE Kit Contractor Installation Instructions thoroughly prior to commencing. Please also request your contractor follow the Installation Instructions fully when completing the installation.

If the HIDE Kit Contractor Installation Instructions are not available, please visit our website and navigate to the *Installation* page to download a copy of the relevant instructions. Alternatively, please email us for an electronic copy.

CARE & MAINTENANCE

AFFORDABLE AND QUICK!



WARNING! DO NOT ALLOW ACID OR CHEMICAL WASH SOLUTIONS TO CONTACT THE HIDE PRODUCT.

BEWARE OF ACID + CHEMICAL WASHING

Pool owners may look at professional acid washing if their pool is suffering from algae build-up and water discolouration. Similarly, home owners may look to clean their outdoor pavers or tiles with a chemical wash. If embarking on either option, please be aware that the HIDE lid should not come into contact with any acid or chemical washing solutions.

Chemical contact with most pool and paving cleaning solutions will rapidly affect the surface finish of the stainless steel HIDE components. The resulting rust will damage the lid inlay, and potentially the structural integrity of the HIDE lid itself. Alternatives are available in the form of “Green Acid Replacement.”

GENERAL CARE

It's a good idea to regularly open your HIDE product and check for and remove any leaf-litter or debris which may have gathered inside the HIDE Edge Protector. If not removed, the debris may cause the HIDE lid to become loose or to sit unevenly.

Check regularly to ensure the HIDE product is fitting well, and is sitting evenly in its recessed area.

CARE & MAINTENANCE

AFFORDABLE AND QUICK!

REMOVING "TEA STAINING"

Occasionally you might notice some cosmetic discolouration on the stainless steel components of the HIDE product, often known as "tea-staining". Although HIDE lids are made of marine grade 316 stainless steel, within water environments it's normal for visible surface rusting to occur. The issue, if treated whenever noticed, will not affect the structural performance of the HIDE product.

Typically the tea-staining will form on the underside of the HIDE lid where residues and salt deposits gather. To clean, all you need is a stainless steel scourer, soapy water and a little elbow grease. Just be sure to use the scourer parallel to the grain direction of the HIDE lid. Rinse thoroughly when done.

Please be aware that if the surface staining is allowed to build up over time, possible rust bleeding may leach onto the HIDE lid inlay or surrounding paving. This is not a fault of the lid and is completely avoidable with occasional cleaning. If allowed to occur over a prolonged period, the leaching may not be able to be removed.

Please note that rain washing is not sufficient in most applications.

FOR FURTHER INFORMATION

Please contact us for any query. We're happy to chat!

P: 07 3807 2551

E: admin@skimmerlids.com.au

  @hideskimmerlids

WWW.SKIMMERLIDS.COM.AU

Australian Patent Application 2018902297
Australian Registered Design 201813786, 201813789
International Patent Applications Pending.