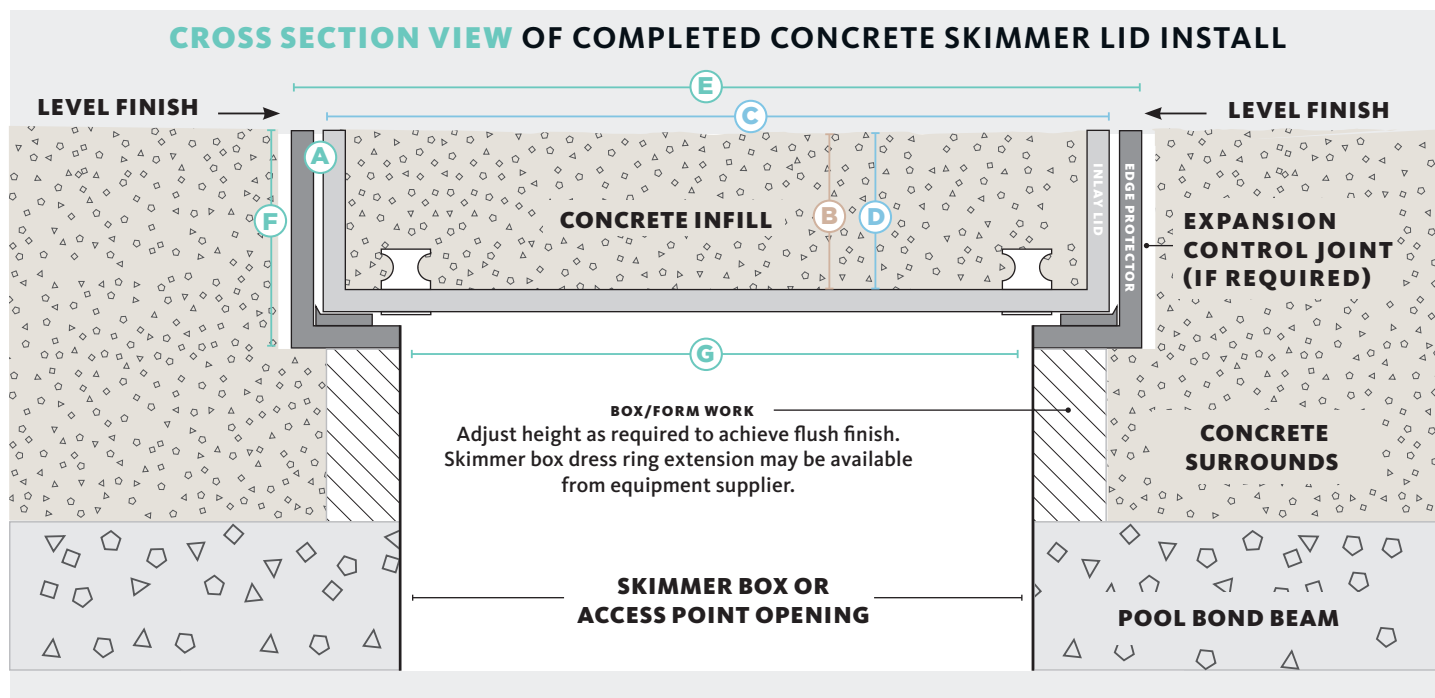


HIDE KIT SERIES

SKIMMER LID AND ACCESS COVERS CONCRETE INFILL



CONCRETE Infill Range (Two Keys and Horizontal Lift)

| Kit Size | Hide Kit | Concrete Thickness | | | Inlay Lid | | Edge Protector Frame | | |
|----------|--------------------|--------------------|----|------|-----------|----------------|----------------------|----------------|-------------------|
| mm | Product Order Code | mm | cm | inch | Size | Internal Depth | Size | External Depth | Underside Opening |

CONCRETE COVER KIT

| | A | B | | | C | D | E | F | G |
|-----|------------|----|---|-------|-------------|--------|-----|----|------------|
| 6" | HCON6-1.6 | 42 | 4 | 15/8" | 5 7/8" sq. | 1 5/8" | 6" | 2" | 4 3/4" sq. |
| 8" | HCON8-1.6 | | | | 7 3/4" sq. | | 8" | | 6 3/8" sq. |
| 10" | HCON10-1.6 | | | | 9 3/4" sq. | | 10" | | 8" sq. |
| 12" | HCON12-1.6 | | | | 11 3/4" sq. | | 12" | | 10" sq. |

DRAIN COVER CONCRETE WET-POUR

| | | | | | | | | | |
|-------|---------------|----|---|--------|---------|--------|-------------|----|------------|
| 12.5" | HDCON12.5-1.6 | 42 | 4 | 1 5/8" | 12" sq. | 1 5/8" | 12 1/4" sq. | 2" | 8 2/3" sq. |
|-------|---------------|----|---|--------|---------|--------|-------------|----|------------|

HIDE products are recommended for use in pedestrian traffic areas only.

Information correct at time of printing, changes may be made without notice. Modifications and updates can be viewed on our website - www.skimmercovers.com

OTHER HIDE PRODUCTS INCLUDE



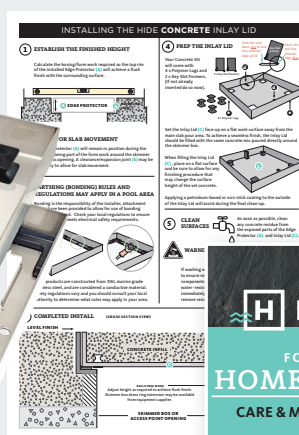
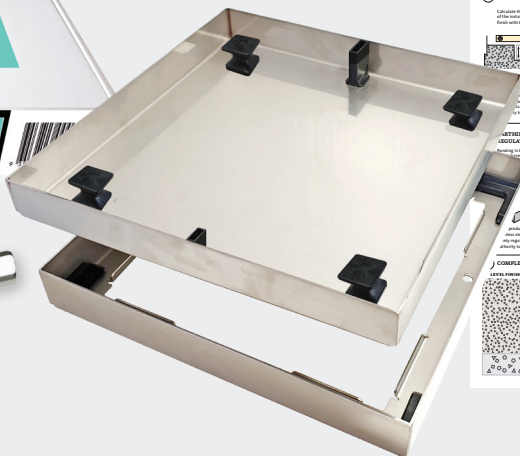
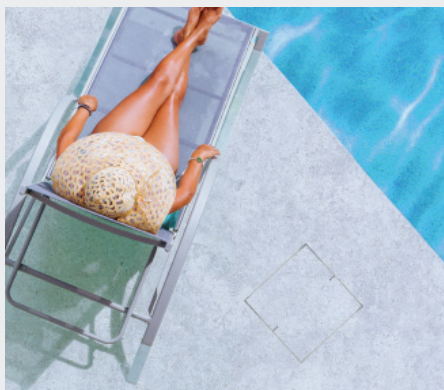
SKIMMER LIDS



ACCESS COVERS



DRAIN COVERS



HIDE CONCRETE COVER KIT INCLUDES

SAFETY KEYS

A 316L marine grade stainless steel tool, to enable the installed HIDE cover to be safely and easily opened and closed.

INLAY LID

A 316L marine grade stainless steel tray which holds the inlay (landscape) materials you've chosen, for example, tile, paver, concrete or decking.

EDGE PROTECTOR

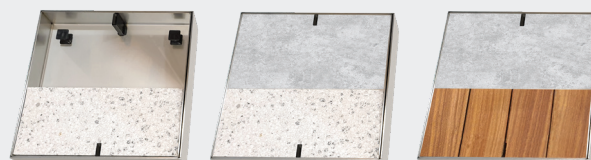
A 316L marine grade stainless steel frame inserted into a recess within the landscaped area. It protects the coping/surrounds from chipping/breakage when the Inlay Cover is opened/closed.

DOCUMENTATION

Documents consist of comprehensive contractor installation instructions, homeowners manual and warranty.

NO ACID / CHEMICAL WASH

ACID and chemical washes will cause discolouration and/or rusting on the stainless steel HIDE components. Acid or chemical contact will void the HIDE warranty.



Worlds only fully customisable dual inlay system


ELEGANT
FINISH


HIGH
GRADE


EASY
INSTALL


10 YEAR
WARRANTY


POOL
SAFE