



HIDE Skimmer Cover



**SAFE.
SEAMLESS.
STUNNING.**

**Sophisticated, seamless covers that
disappear into your landscape.**

HIDE's innovative lids for skimmer boxes, access points, drains and wet-pour concrete applications are available in a range of sizes to suit most applications where a sophisticated upmarket finish is required.

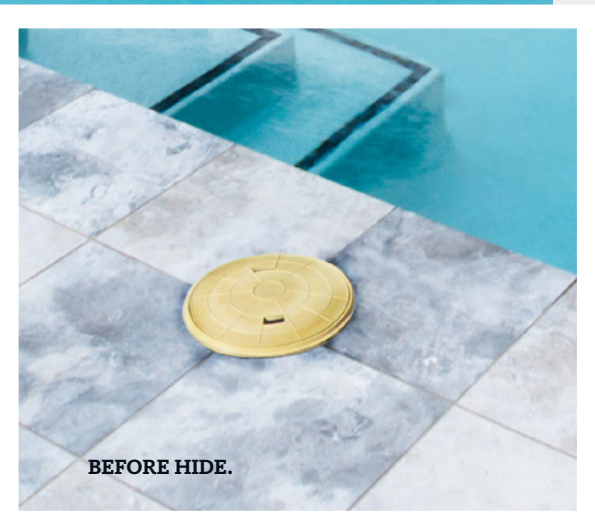
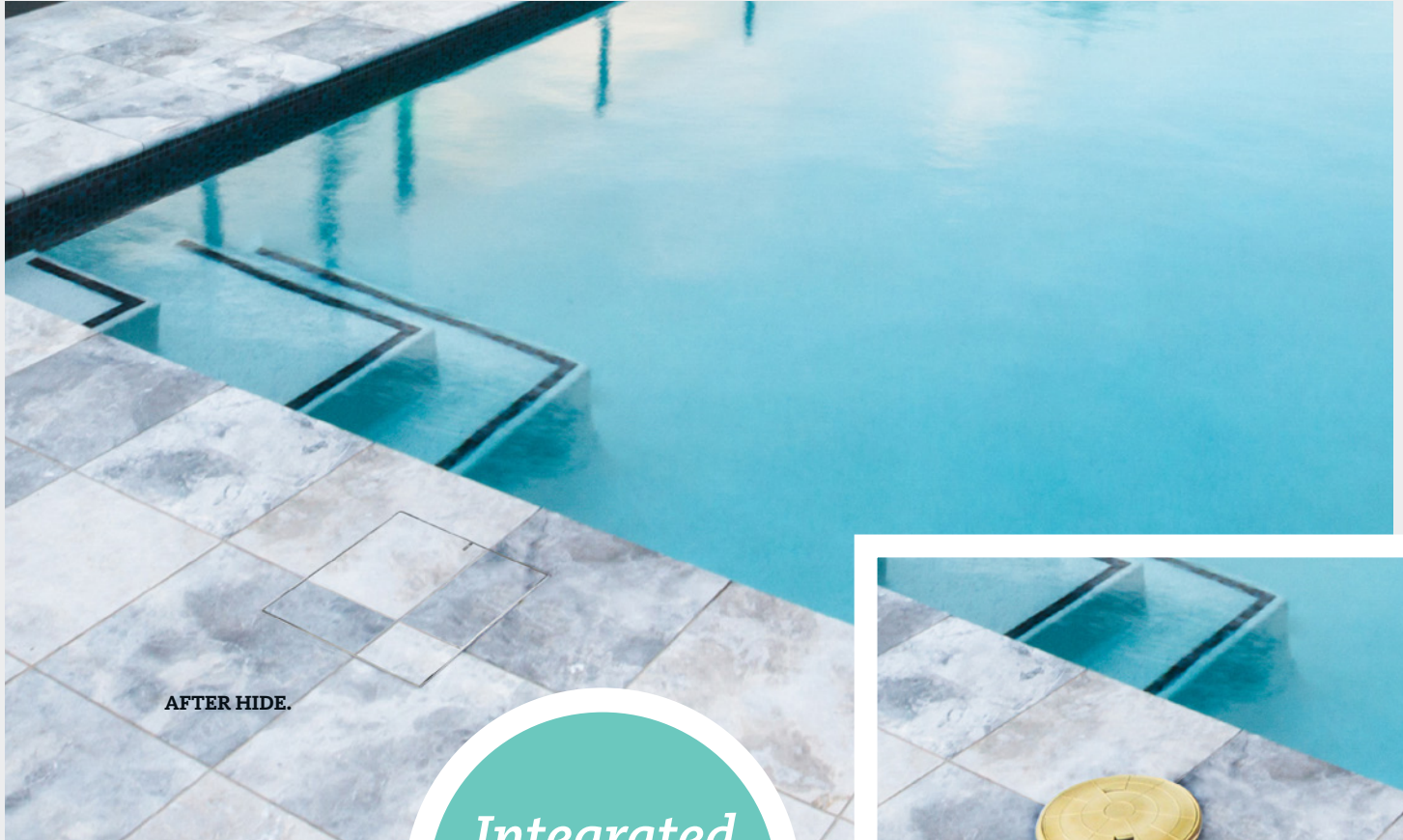
HIDE lids are designed to carry your selection of tiles, timber or concrete to match the pool surrounds, creating a luxurious, uninterrupted outdoor space.



Traditional Skimmer Lid



PROUDLY MANUFACTURED BY:
SKIMMER LIDS
PTY LTD



**SAFE.
SEAMLESS.
STUNNING.**

*Integrated
pattern!*

A new breed of skimmer lid reinventing the poolscape.

HIDE lids are readily installed in new poolscape or when refurbishing existing landscapes.

Our design allows for easy and affordable installation, on-site by a contractor.

Every kit contains all the components for a no-fuss assembly, resulting in the homeowner having a safe and seamless finish.



The skimmer box cover - frame, lid and key product contained herein is covered by Int. Appln PCT/AU2018/000149
The skimmer box cover - frame and lid product contained herein is covered by U.S. Design Patent Appln. No. 29/663,823

HIDE KIT SERIES

SKIMMER LID / ACCESS COVER



HIDE SKIMMER LID KIT INCLUDES

SAFETY KEY

A 316L marine grade stainless steel tool, to enable the installed HIDE cover to be safely and easily opened and closed.

HEIGHT ADJUSTER

Used only when additional height is required. Provides 2mm extra height if inlay material is not thick enough to achieve a flush finish with the top of the Inlay Cover.

INLAY LID

A 316L marine grade stainless steel tray which holds the inlay (landscape) materials you've chosen, for example, tile, paver, concrete or decking.

EDGE PROTECTOR

A 316L marine grade stainless steel frame inserted into a recess within the landscaped area. It protects the coping/surrounds from chipping/breakage when the Inlay Cover is opened/closed.

ADHESIVE AND DOCUMENTATION

A one-part adhesive specially developed for a long-term fitting of natural stone and porcelain tiles into the HIDE Inlay Series. Documents consist of comprehensive contractor installation instructions, homeowners warranty and manual.

NO ACID / CHEMICAL WASH

ACID and chemical washes will cause discolouration and/or rusting on the stainless steel HIDE components. Acid or chemical contact will void the HIDE warranty.


ELEGANT
FINISH


HIGH
GRADE


EASY
INSTALL


10 YEAR
WARRANTY


POOL
SAFE

The skimmer box cover - frame, lid and key product contained herein is covered by Int. Appln PCT/AU2018/000149
The skimmer box cover - frame and lid product contained herein is covered by AU Reg Design 201813786 AND 20183789.



HIDE Concrete Cover



**THE
CHOICE.
IS CLEAR.**

HIDE Skimmer Lid Concrete (HCON12-1.6")

HIDE Concrete Skimmer Lids, and Access Covers utilizes a specially designed Edge Protector which provides the perfect reinforcement for a wet-pour concrete.

The HIDE Concrete kit is filled and finished at the same time as the landscape surrounds, ensuring the lid perfectly matches the selected surface finish in both texture and color.

If you want to finish your pool surrounds in decorative concrete, this is the product for you!

After installation, avoid any acid wash contact with your stainless steel.

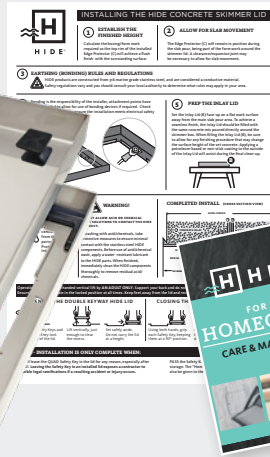
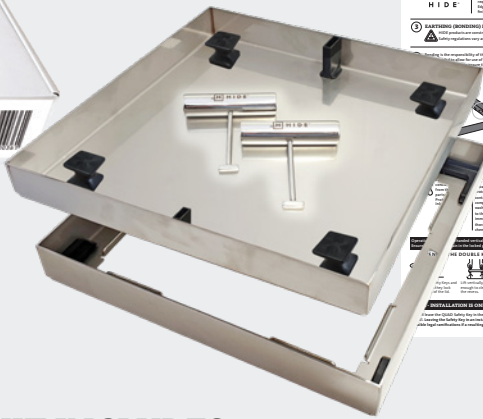


HIDE Access Cover Concrete (HCON12-1.6")

The skimmer box cover - lid and key product contained herein is covered by U.S. Patent Appln. No. 15/336,801
The skimmer box cover - lid product contained herein is covered by U.S. Dsg Pat No.D819788

HIDE KIT SERIES

CONCRETE



HIDE CONCRETE COVER KIT INCLUDES

SAFETY KEYS

A 316L marine grade stainless steel tool, to enable the installed HIDE cover to be safely and easily opened and closed.

INLAY LID

A 316L marine grade stainless steel tray which holds the inlay (landscape) materials you've chosen, for example, tile, paver, concrete or decking.

All HIDE Kits 4, 5, 6cm in depth are supplied with two keys and lugs and are suitable for any combination of concrete, tile, stone or paver installations. (See last page for 5 & 6cm depth kits)

All HIDE Kits 1, 2, 3cm in depth are single key products and not suitable for concrete applications.

EDGE PROTECTOR

A 316L marine grade stainless steel frame inserted into a recess within the landscaped area. It protects the coping/surrounds from chipping/breakage when the Inlay Cover is opened/closed.

DOCUMENTATION

Documents consist of comprehensive contractor installation instructions, homeowners manual and warranty.

NO ACID / CHEMICAL WASH

ACID and chemical washes will cause discolouration and/or rusting on the stainless steel HIDE components. Acid or chemical contact will void the HIDE warranty.

ELEGANT
FINISH

HIGH
GRADE

EASY
INSTALL

10 YEAR
WARRANTY

POOL
SAFE

Concrete Kit Range

KIT SIZE	HIDE KIT	CONCRETE THICKNESS			INLAY LID		EDGE PROTECTOR FRAME		
		mm	cm	INCH	SIZE	INTERNAL DEPTH	SIZE	EXTERNAL DEPTH	UNDERSIDE OPENING
	A	B			C	D	E	F	G
156	HCON6-1.6	42	4	1 5/8"	5 7/8" sq.	1 5/8"	6"	2"	4 3/4" sq.
206	HCON8-1.6				7 3/4" sq.		8"		6 3/8" sq.
256	HCON10-1.6				9 3/4" sq.		10"		8" sq.
306	HCON12-1.6				11 3/4" sq.		12"		10" sq.

HIDE products are recommended for use in pedestrian traffic areas only.

Information correct at time of printing, changes may be made without notice. Modifications and updates can be viewed on our website - www.skimmercovers.com

HIDE Access Cover

As with all HIDE products, the Access Cover is designed to carry your selection of landscaping material to match the surrounds, allowing the lid to blend seamlessly into your outdoor area.

HIDE Access Covers are available in a selection of sizes and depths.

Access covers provide easy entry to service points such as:

- drain waste vent (DWV)
- water table pipe
- water and balance tanks
- taps and irrigation
- valves and meters
- electrical junction box

HIDE recommends its products for use in pedestrian traffic areas only.

HIDE recommends discussing the use of an access cover with your project manager at the beginning of new landscape design.

HIDE Access Cover (HSL12-1.6)

HIDE Drain Cover

HIDE Drain covers allow for your chosen landscape material to seamlessly conceal the drain access, resulting in a visually appealing and discreet service cover.

HIDE Drain Cover Kits are designed to suit a water intake compatible with a standard 3 1/2" or 4" (9cm or 10cm) drainage network, providing superior safety and performance.

Consult your drain layer for site water flow requirements.

HIDE recommends its products for use in pedestrian traffic areas only.

12" Drain Cover Kit



HIDE Drain Cover (HDC12.5-1.2")

HIDE KIT	MATERIAL THICKNESS			INLAY LID		EDGE PROTECTOR FRAME		
PRODUCT ORDER CODE	mm	cm	INCH	SIZE	INTERNAL DEPTH	SIZE	EXTERNAL DEPTH	UNDERSIDE OPENING
A	B			C	D	E	F	G
HDC12.5-0.4	8-11	1	3/8" - 1/2"	12" sq.	1/2"	12 1/4" sq.	7/8"	8 2/3" sq.
HDC12.5-0.8	15-22	2	5/8" - 7/8"		7/8"		1 1/4"	
HDC12.5-1.2	25-32	3	1" - 1 1/4"		1 1/4"		1 5/8"	
HDC12.5-1.6	35-42	4	1 3/8" - 1 5/8"		1 5/8"		2"	
DRAIN COVER CONCRETE WET-POUR								
HDCON12.5-1.6	35-42	4	1 3/8" - 1 5/8"	12" sq.	1 5/8"	12 1/4" sq.	2"	8 2/3" sq.

SAFETY KEY

- The Safety Key is used to operate all HIDE lids/covers.
- To prevent children accessing the skimmer box, always store the Safety Key out of the reach of children, in a secure location.
- NEVER leave the Safety Key in the lid for any reason. The key is not specified or designed to remain in the lid.
- NEVER carry the full weight of the lid with the Safety Key. Using the key as a handle may damage it and will void your warranty.
- The Key is also constructed from 316 marine grade stainless steel, and is replaceable.



New Pool - Allow for depth of Recess Frame

MUCH MORE TO LOVE

HIDE's beautiful, streamlined finish is an absolute hit with homeowners. The HIDE design also features these major benefits:



ELEGANT FINISH

A totally integrated + flush finish means the HIDE Cover is essentially invisible.



EASY USE

HIDE covers are compact, and super easy to use.



LONG LIFE

Protect the inlay materials from chipping or breaking for the life of the pool.



HIGH GRADE

316L marine grade stainless steel frames + 10 year warranty!



POOL SAFE

100% compliant with Pool Safety standards.



GOOD PRICE

HIDE kits represent excellent value for money.



Existing Pool - Position the Edge Protector



Existing Pool - Measure and cut to install

Not all Skimmer Lids were created equal.

Traditional skimmer lid options have plenty of quality and safety concerns, which can cause serious headaches for homeowners and contractors alike. What's worse, is that many don't even meet relevant Pool Safety Standards!

TRADITIONAL PLASTIC OPTION

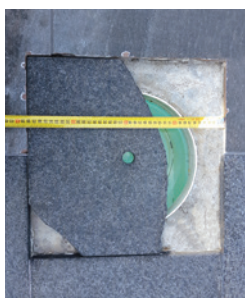
A cheap, plastic lid which is unsightly and requires regular replacement due to sun damage and wear.



LOOSE STONE/TILE OPTION

A brittle option which is often short-lived and quickly becomes unattractive due to damage. Loose stone usually breaks/chips quickly, or causes chipping or damage to the surrounding stone.

A loose stone is often NOT compliant or POOL SAFE.



HIDE Skimmer Lid (HSL12-1.2")

HIDE is your superior alternative to unsightly plastic/loose stone lids.

Skimmer & Access Cover Kits

HIDE KIT PRODUCT ORDER CODE	MATERIAL THICKNESS			INLAY LID		EDGE PROTECTOR FRAME		
	mm	cm	INCH	SIZE	INTERNAL DEPTH	SIZE	EXTERNAL DEPTH	UNDERSIDE OPENING

6" Access Cover Kit

A	B			C	D	E	F	G
HAC6-0.4	8-11	1	3/8" - 1/2"	5 3/4" sq.	1/2"	6" sq.	7/8"	4 1/3" sq.
HAC6-0.8	15-22	2	5/8" - 7/8"		7/8"		1 1/4"	
HAC6-1.2	25-32	3	1" - 1 1/4"		1 1/4"		1 5/8"	
HAC6-1.6	35-42	4	1 3/8" - 1 5/8"		1 5/8"		2"	
HAC6-2	45-52	5	1 3/4" - 2"		2"		2 1/2"	
HAC6-2.5	55-62	6	2 1/4" - 2 1/2"		2 1/2"		3"	

8" Access Cover Kit

HAC8-0.4	8-11	1	3/8" - 1/2"	7 3/4" sq.	1/2"	8" sq.	7/8"	6 3/8" sq.
HAC8-0.8	15-22	2	5/8" - 7/8"		7/8"		1 1/4"	
HAC8-1.2	25-32	3	1" - 1 1/4"		1 1/4"		1 5/8"	
HAC8-1.6	35-42	4	1 3/8" - 1 5/8"		1 5/8"		2"	
HAC8-2	45-52	5	1 3/4" - 2"		2"		2 1/2"	
HAC8-2.5	55-62	6	2 1/4" - 2 1/2"		2 1/2"		3"	

10" Access Cover Kit

HAC10-0.4	8-11	1	3/8" - 1/2"	9 3/4" sq.	1/2"	10" sq.	7/8"	9" sq.
HAC10-0.8	15-22	2	5/8" - 7/8"		7/8"		1 1/4"	
HAC10-1.2	25-32	3	1" - 1 1/4"		1 1/4"		1 5/8"	
HAC10-1.6	35-42	4	1 3/8" - 1 5/8"		1 5/8"		2"	
HAC10-2	45-52	5	1 3/4" - 2"		2"		2 1/2"	
HAC10-2.5	55-62	6	2 1/4" - 2 1/2"		2 1/2"		3"	

12" Skimmer and Access Cover Kit

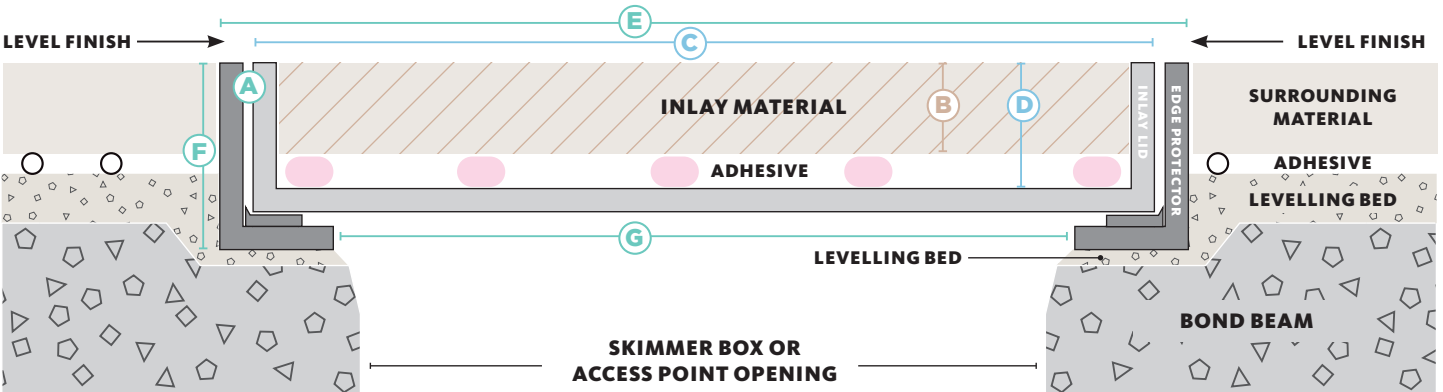
HSL12-0.4	8-11	1	3/8" - 1/2"	11 3/4" sq.	1/2"	12" sq.	7/8"	10" sq.
HSL12-0.8	15-22	2	5/8" - 7/8"		7/8"		1 1/4"	
HSL12-1.2	25-32	3	1" - 1 1/4"		1 1/4"		1 5/8"	
HSL12-1.6	35-42	4	1 3/8" - 1 5/8"		1 5/8"		2"	
HSL12-2	45-52	5	1 3/4" - 2"		2"		2 1/2"	
HSL12-2.5	55-62	6	2 1/4" - 2 1/2"		2 1/2"		3"	

20" Access Cover Kit

HAC20-0.8	15-22	2	5/8" - 7/8"	19 3/4" sq.	7/8"	20" sq.	1 1/4"	18" sq.
-----------	-------	---	-------------	-------------	------	---------	--------	---------

26" Access Cover Kit

HAC26-0.8	15-22	2	5/8" - 7/8"	25 3/4" sq.	7/8"	26" sq.	1 1/4"	24" sq.
-----------	-------	---	-------------	-------------	------	---------	--------	---------




HIDE products are recommended for use in pedestrian traffic areas only. Information correct at time of printing, changes may be made without notice.
Modifications and updates can be viewed on our website: www.skimmercovers.com



HIDE UNITED STATES TEAM

Toll free: 1844 500 HIDE (4433)
M: +61 438 075 641
W: www.skimmercovers.com

National Sales Manager - **Mr Darryl Smith** - darryl.smith@skimmerlids.com.au
East Coast Sales Manager - **Mr Sam Hazell** - sam.hazell@skimmerlids.com.au
West Coast Sales Manager - **Mr Sheldon Purdy** - sheldon.purdy@skimmerlids.com.au

    @hideskimmerlids

PROUDLY MANUFACTURED BY: **SKIMMER LIDS**

The Skimmer box cover - Frame, Lid and Key product contained herein is covered by International Application PCT/AU2018/000149
The Skimmer box cover - Frame and Lid product contained herein is covered by AU Registered Design 201813786 and 20183789