



# Exterior Covers

ENGINEERED EXCELLENCE SINCE 2014

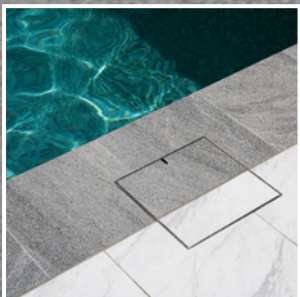
**H I D E**®

The essential upgrade for premium outdoor design.  
Off-the-shelf kit, ready for on-site install.



Deliver the seamless integration modern landscapes demand—robust access stays out of sight.

Discover the possibilities with HIDE Inlay Kits.



SKIMMER LIDS



ACCESS COVERS



DRAIN COVERS



MANHOLE COVERS



LEARN MORE

## SKIMMER COVERS



### Discreet Solution for Modern Pool Design

HIDE Skimmer Lids offer a premium alternative to traditional plastic covers, combining durability, safety, and style. Engineered from 316 marine-grade stainless steel, HIDE lids are built to withstand harsh outdoor conditions without cracking or fading over time. The unique inlay design allows you to insert your choice of tile, stone, turf or concrete, creating a seamless, flush finish that blends perfectly with your pool surrounds.

Sleek, strong, and virtually invisible, HIDE delivers a clean, cohesive look while enhancing safety underfoot.

### Engineered for performance



Without HIDE

HIDE Skimmer Cover

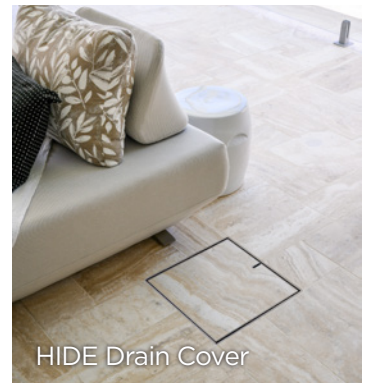
## DRAIN COVERS

HIDE Drain Covers are designed to seamlessly integrate with your chosen surface material, providing a discreet and durable solution for concealing drain access in both residential and commercial outdoor spaces. Their flush, elegant finish enhances the overall aesthetic while maintaining full surface water drainage functionality.

Each cover is easily removable, allowing for quick access during inspections or maintenance. Common applications include patios, pathways, landscaped areas, pool surrounds, balconies, and rooftop terraces—anywhere you need reliable surface water management without compromising on design.



Without HIDE



HIDE Drain Cover

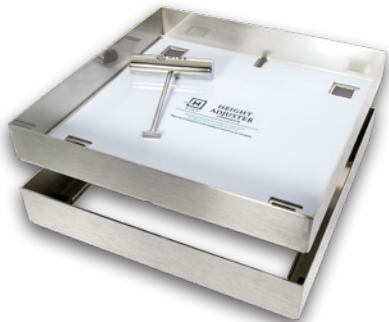
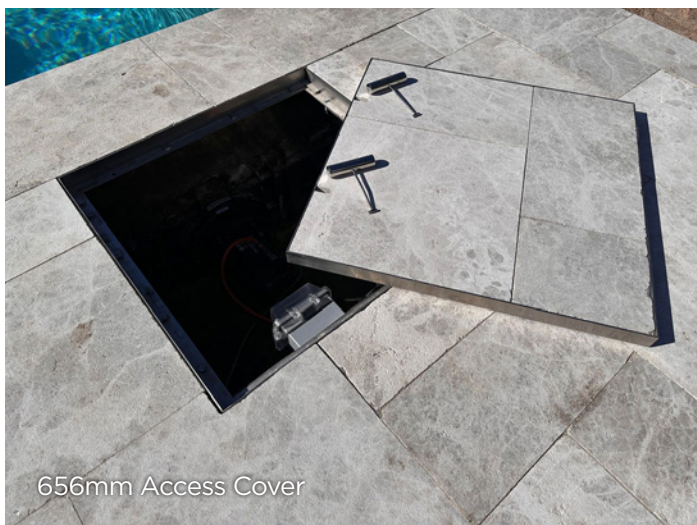
### Refined Finish



Note: Plastic drain pit is not included



## ACCESS COVERS



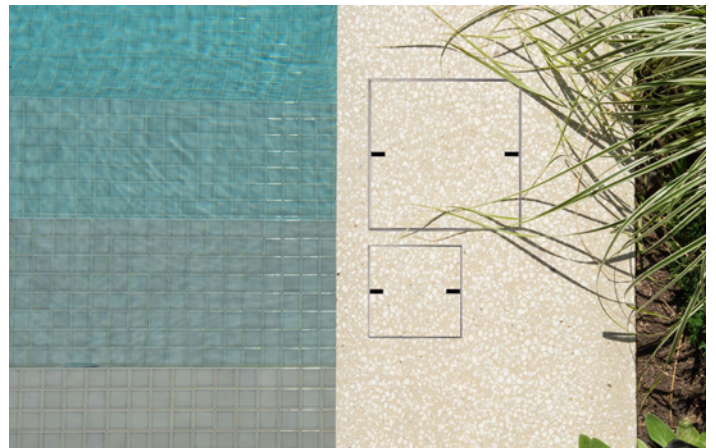
## Essential Access, Elegantly Concealed

HIDE Access Covers are the ultimate solution for concealing external service points—such as inspection ports, valve boxes, or junction pits—without compromising the look of your outdoor space. Designed to integrate seamlessly with your surface material, HIDE creates a clean, flush finish that virtually disappears from view.

As the most discreet option on the market, whether used in patios, garden paths, or paved areas, HIDE Access Covers maintain the integrity of your design while keeping essential services easily accessible.

## A cover for all applications

## CONCRETE COVERS



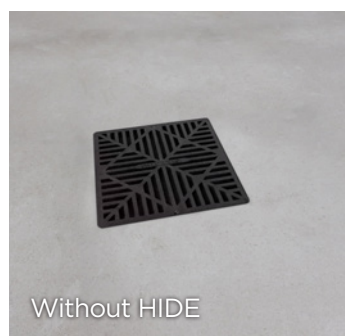
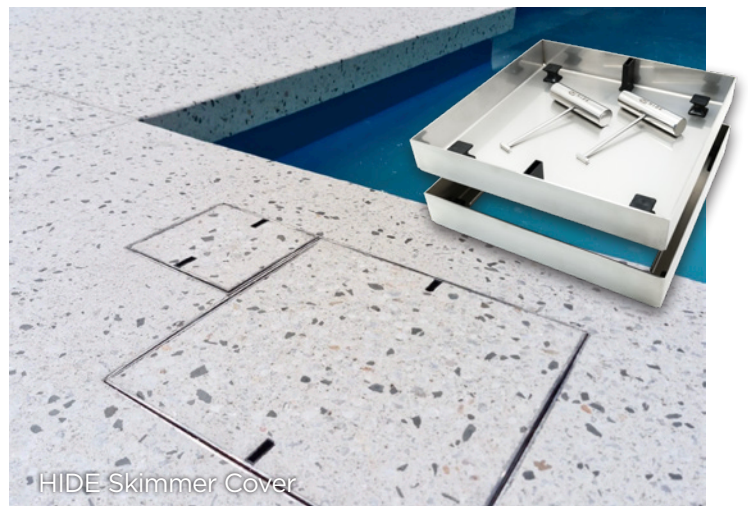
## Wet-pour ready

HIDE kits with depths ranging from 1.6" to 2.5" are specifically designed to suit concrete wet-pour applications.

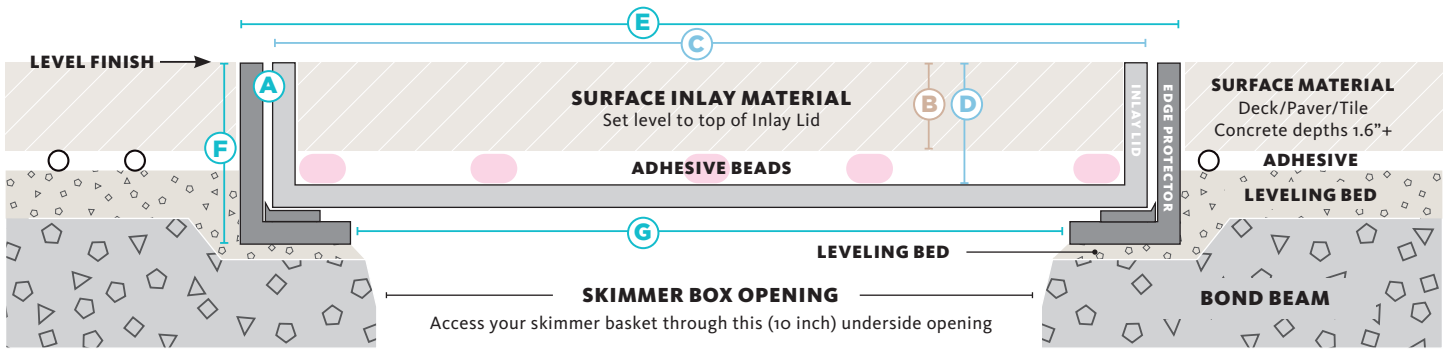
HIDE Concrete Covers are designed to blend in flawlessly, creating a clean, uninterrupted surface that enhances the beauty of your pool surrounds.

Poured and finished at the same time as the surrounding concrete, the HIDE lid matches perfectly in both texture and colour—no edges, no mismatched materials, just a seamless finish. Each kit is ready for concrete wet-pour and includes a specially designed Edge Protector and all components needed for a smooth, professional result.

For a sleek, durable, and truly integrated look, the HIDE Concrete Skimmer Cover is the perfect finishing touch.



# SKIMMER COVER SIZES

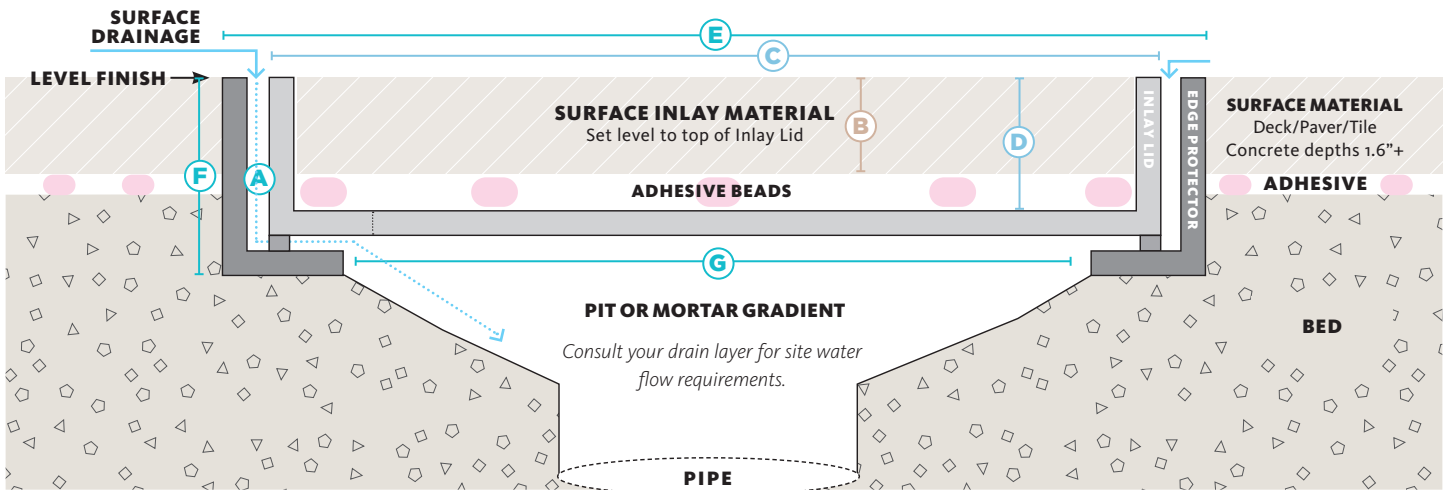


HIDE KIT PRODUCT ORDER CODE	MATERIAL THICKNESS			INLAY LID		EDGE PROTECTOR FRAME			CONCRETE
	mm	cm	INCH	SIZE	INTERNAL DEPTH	SIZE	EXTERNAL DEPTH	UNDERSIDE OPENING	WET-POUR CON-PARTS
<b>A</b>	<b>B</b>			<b>C</b>	<b>D</b>	<b>E</b>	<b>F</b>	<b>G</b>	INCLUDED

## 12" Skimmer and Access Cover Kit (same size, same kit)

HSL12-0.4	8-11	1	3/8" - 1/2"	11 3/4" sq.	1/2"	12" sq.	7/8"	10" sq.	not suited
HSL12-0.8	15-22	2	5/8" - 7/8"		7/8"		1 1/4"		
HSL12-1.2	25-32	3	1" - 1 1/4"		1 1/4"		1 5/8"		
HSL12-1.6	35-42	4	1 3/8" - 1 5/8"		1 5/8"		2"		yes
HSL12-2.0	45-52	5	1 3/4" - 2"		2"		2 1/2"		
HSL12-2.5	55-62	6	2 1/4" - 2 1/2"		2 1/2"		3"		

# DRAIN COVER SIZES



## 12.5" Drain Cover Kit

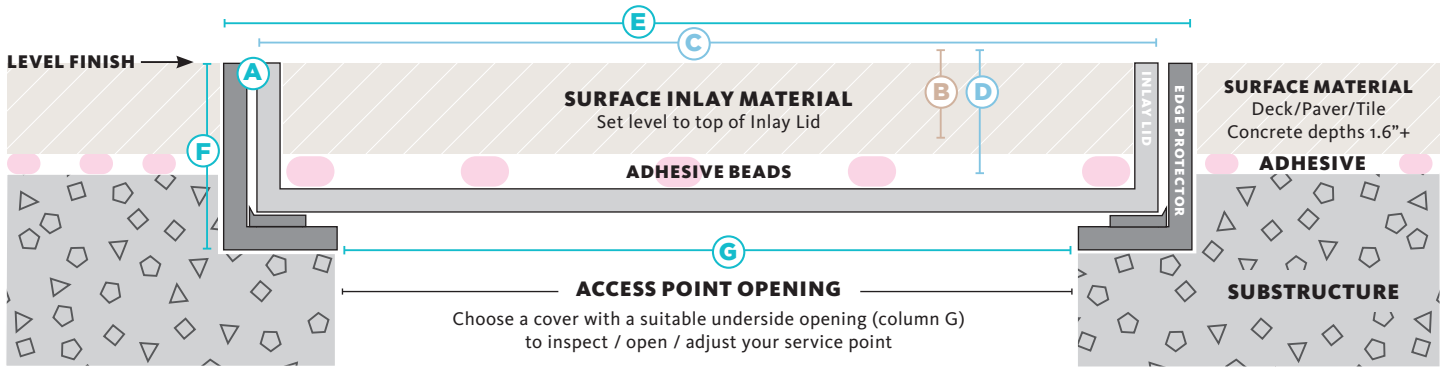
Note: Plastic drain pits and pipe are not included

HIDE KIT PRODUCT ORDER CODE	MATERIAL THICKNESS			INLAY LID		EDGE PROTECTOR FRAME			CONCRETE
	mm	cm	INCH	SIZE	INTERNAL DEPTH	SIZE	EXTERNAL DEPTH	UNDERSIDE OPENING	WET-POUR CON-PARTS
<b>A</b>	<b>B</b>			<b>C</b>	<b>D</b>	<b>E</b>	<b>F</b>	<b>G</b>	INCLUDED
HDC12.5-0.4	8-11	1	3/8" - 1/2"	12" sq.	1/2"	12 1/4" sq.	7/8"	10 1/4" sq.	not suited
HDC12.5-0.8	15-22	2	5/8" - 7/8"		7/8"		1 1/4"		
HDC12.5-1.2	25-32	3	1" - 1 1/4"		1 1/4"		1 5/8"		
HDC12.5-1.6	35-42	4	1 3/8" - 1 5/8"		1 5/8"		2"		yes
HDC12.5-2.0	45-52	5	1 3/4" - 2"		2"		2 1/2"		
HDC12.5-2.5	55-62	6	2 1/4" - 2 1/2"		2 1/2"		3"		

## 26" Drain Cover Kit

HDC26-0.8	15-22	2	5/8" - 7/8"	25 1/4"sq.	7/8"	26"sq.	1 5/16"	23 5/8"sq.	not suited
HDC26-1.2	25-32	3	1" - 1 1/4"		1 1/4"		1 11/16"		

# ACCESS COVER SIZES



HIDE KIT PRODUCT ORDER CODE	MATERIAL THICKNESS			INLAY LID		EDGE PROTECTOR FRAME			CONCRETE
	mm	cm	INCH	SIZE	INTERNAL DEPTH	SIZE	EXTERNAL DEPTH	UNDERSIDE OPENING	WET-POUR CON-PARTS

## 6" Access Cover Kit

A	B			C	D	E	F	G	INCLUDED
HAC6-0.4	8-11	1	3/8" - 1/2"	5 3/4"sq.	1/2"	6"sq.	7/8"	4 1/3"sq.	not suited
HAC6-0.8	15-22	2	5/8" - 7/8"		7/8"		1 1/4"		
HAC6-1.2	25-32	3	1" - 1 1/4"		1 1/4"		1 5/8"		
HAC6-1.6	35-42	4	1 3/8" - 1 5/8"		1 5/8"		2"		
HAC6-2	45-52	5	1 3/4" - 2"		2"		2 1/2"		
HAC6-2.5	55-62	6	2 1/4" - 2 1/2"		2 1/2"		3"		

## 8" Access Cover Kit

HAC8-0.4	8-11	1	3/8" - 1/2"	7 3/4"sq.	1/2"	8"sq.	7/8"	6 3/8"sq.	not suited
HAC8-0.8	15-22	2	5/8" - 7/8"		7/8"		1 1/4"		
HAC8-1.2	25-32	3	1" - 1 1/4"		1 1/4"		1 5/8"		
HAC8-1.6	35-42	4	1 3/8" - 1 5/8"		1 5/8"		2"		
HAC8-2	45-52	5	1 3/4" - 2"		2"		2 1/2"		
HAC8-2.5	55-62	6	2 1/4" - 2 1/2"		2 1/2"		3"		

## 10" Access Cover Kit

HAC10-0.4	8-11	1	3/8" - 1/2"	9 3/4"sq.	1/2"	10"sq.	7/8"	8.5"sq.	not suited
HAC10-0.8	15-22	2	5/8" - 7/8"		7/8"		1 1/4"		
HAC10-1.2	25-32	3	1" - 1 1/4"		1 1/4"		1 5/8"		
HAC10-1.6	35-42	4	1 3/8" - 1 5/8"		1 5/8"		2"		
HAC10-2	45-52	5	1 3/4" - 2"		2"		2 1/2"		
HAC10-2.5	55-62	6	2 1/4" - 2 1/2"		2 1/2"		3"		

## 12" Skimmer and Access Cover Kit (same size, same kit)

HSL12-0.4	8-11	1	3/8" - 1/2"	11 3/4"sq.	1/2"	12"sq.	7/8"	10"sq.	not suited
HSL12-0.8	15-22	2	5/8" - 7/8"		7/8"		1 1/4"		
HSL12-1.2	25-32	3	1" - 1 1/4"		1 1/4"		1 5/8"		
HSL12-1.6	35-42	4	1 3/8" - 1 5/8"		1 5/8"		2"		
HSL12-2	45-52	5	1 3/4" - 2"		2"		2 1/2"		
HSL12-2.5	55-62	6	2 1/4" - 2 1/2"		2 1/2"		3"		

## 20" Access Cover Kit

HAC20-0.8	15-22	2	5/8" - 7/8"	19 3/4"sq.	7/8"	20"sq.	1 1/4"	18"sq.	not suited
HAC20-1.2	25-32	3	1" - 1 1/4"		1 1/4"		1 5/8"		

## 26" Access Cover Kit

HAC26-0.8	15-22	2	5/8" - 7/8"	25 9/16"sq.	7/8"	26"sq.	1 5/16"	23 5/8"sq.	not suited
HAC26-1.2	25-32	3	1" - 1 1/4"		1 1/4"		1 11/16"		



# Exterior Covers

SAFE. SEAMLESS. STUNNING.

**H I D E**<sup>®</sup>

COVERED WITH CONFIDENCE

See us on socials @hideskimmerlids or scan this QR Code >>>



## CARE FOR YOUR STAINLESS STEEL COVER

- Requires simple, occasional cleaning
- Keep all acid and harsh chemicals away
- Avoid high-concentration chlorine near external fittings
- Enjoy peace of mind with our 10-Year Warranty when guidelines are followed

Scan the QR code to view full Care & Maintenance guidelines



Without HIDE



HIDE Drain Cover

### Before & After HIDE



Without HIDE



HIDE Skimmer Cover

## INSTALLATION

HIDE Covers integrate effortlessly into both new and existing landscapes. Designed for simplicity, they allow for quick, cost-effective installation by any contractor—right on site.

Each kit includes everything you need. Just add your chosen inlay material and align the pattern for a seamless, professional finish.



Instrucciones De Instalacion



Installation English

## SAFETY KEY

- The Safety Key easily operates all HIDE lids & covers.
- Key is heavy duty, and constructed from marine grade stainless steel.
- Keep it out of reach of children.



## A complete kit ready for your inlay



### Head Office Australia

26 Link Drive, Yatala, Qld, 4207, Australia  
Phone: +61 7 3807 2551  
Email: admin@skimmercovers.com

@hideskimmerlids



### North America

Scan to Connect with a HIDE Sales Manager in your area.

Email: admin@skimmercovers.com  
Web: www.skimmercovers.com  
+1 949-942-4977



Patents: www.skimmercovers.com

