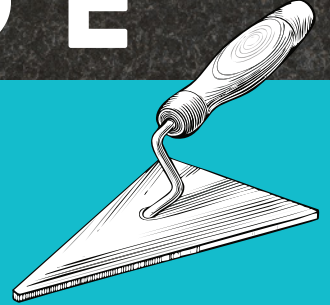




Complete
Product
Range

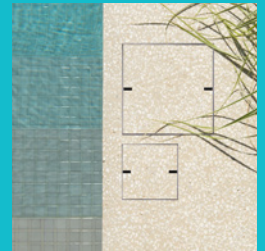
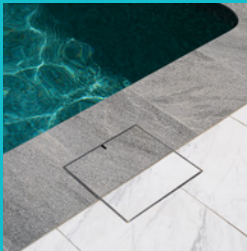


 **HIDE**®



FOR THE CONTRACTOR

INSTALLATION INSTRUCTIONS



WARNING! DO NOT ALLOW ACID OR CHEMICAL
WASH SOLUTIONS TO CONTACT THE HIDE PRODUCT.

WHAT YOU GET IN THE KIT

A HIDE SAFETY KEY



The key is used to open and close the HIDE Lid.
 Kits 10, 20 & 30mm are single key models. (0.4, 0.8, 1.2")
 Kits 40, 50 & 60mm are double key models. (1.6, 2, 2.5")



Do not leave the key in the COVER!

B HEIGHT ADJUSTER



This 'packer' provides extra height if inlay material is not thick enough to achieve a flush finish with the top of the Inlay Cover.

The height adjuster suits both single key and double key models.



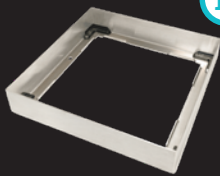
Do not use the Height Adjuster as a template for cutting the key-way.

C INLAY COVER



A tray which holds the inlay material e.g. tile, paver, decking, cement.

D EDGE PROTECTOR



A frame inserted into a recess within the landscaped area. It protects the coping/surrounds from chipping/breakage.

E ADHESIVE



HIDE Adhesive to be inserted into a caulking gun. For use when assembling the Inlay Cover.

F INSTRUCTIONS



QR Code links to valuable information.

- 1) These installation Instructions
- 2) Homeowner Care and Maintenance
- 3) Homeowner Warranty

EQUIPMENT YOU'LL NEED

(The type of inlay materials to be fitted will determine the tools required.)



CIRCULAR SAW



ANGLE GRINDER
 For cutting a keyway in the inlay material.



SPONGE + WATER



PERSONAL PROTECTIVE EQUIPMENT (PPE)



LEVEL WORK SURFACE



CAULKING GUN



TAPE MEASURE + MARKER



GENERAL PURPOSE BUCKET



MORTAR BED MIX
 For installing the Edge Protector.



TROWEL



EXPANSION JOINT GAP FILLER
 If sealing around the Edge Protector (recommended).



GROUT & SPACERS
 If grouting tiled/stone inlay.

EARTHING YOUR SKIMMER LID



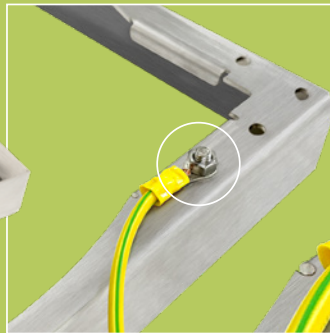
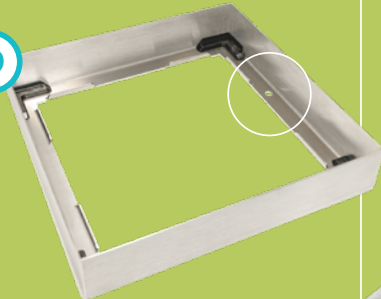
EARTHING (BONDING) RULES FOR SWIMMING POOLS

When installing stainless steel components like the HIDE Stainless Steel Edge Protector near swimming pools, it's important to be aware that local electrical safety regulations may require these metal elements to be electrically bonded or earthed.

It's essential to consult with a qualified electrician familiar with local codes to determine if bonding or earthing is necessary for your specific installation.

The HIDE Edge Protector has a hole pre-drilled for attaching the earthing wire and lug.

D



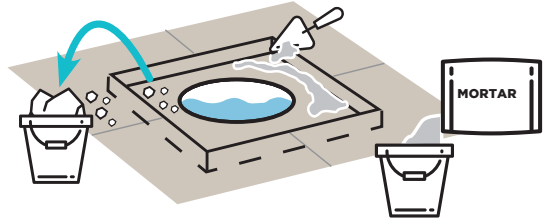
INSTALLING THE EDGE PROTECTOR

FITTING TILE/STONE INLAY

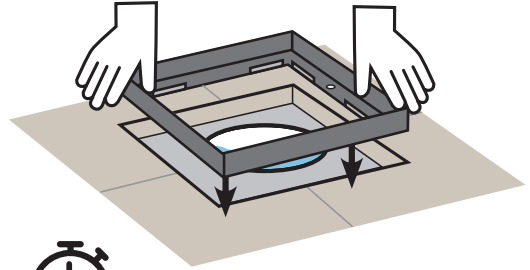


D EDGE PROTECTOR

- 3** **INSTALL MORTAR** - Remove debris from recess then fill with a mortar bed.

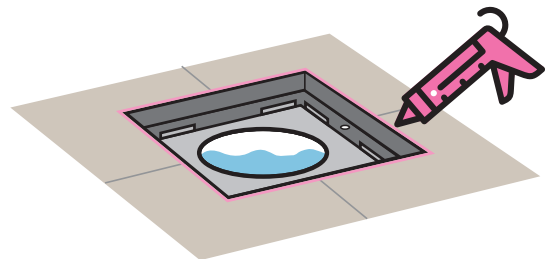


- 4** **PUSH IN EDGE PROTECTOR** - Ensure edge protector sits level with surrounds.



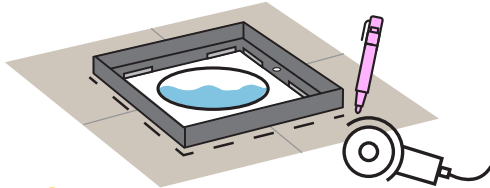
ALLOW MORTAR TO SET

- 5** **EDGE PROTECTOR** - The Edge Protector may be left loose on its mortar bed or filled with an expansion joint gap filler.



EXISTING POOLS

- 1** **CUTOUT** - Mark outline for cutting surrounds and cut depth to match selected edge protector and a mortar bed.



- !** Ensure edge protector is centered over skimmer to mark cutting area. Allow for 1-2mm (1/16") clearance on all sides creating an expansion gap.

NEW POOLS

- 2** **SET DEPTH** - When laying leveling bed, provide space for edge protector so it will be flush with top of installed tiles.



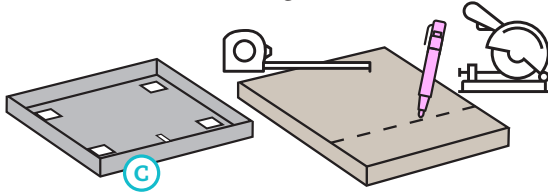
INSTALLING THE INLAY COVER



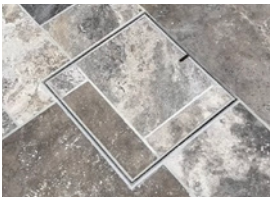
C INLAY COVER

- 6 CUT TILE (INLAY) TO SIZE**
If using tumbled/chiseled edge tile/stone cut all 4 edges for a better finish.

! A feature of this product is to align inlay and grout lines to coping/surrounds. Mark and cut to suit the inlay position with surrounding tiles.



GROUT MATCHED



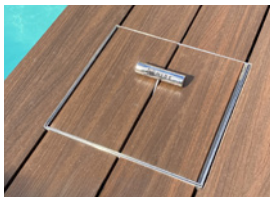
TILE BANDING



INTRICATE PATTERNS

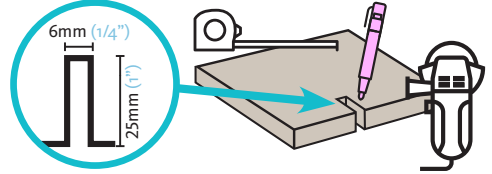


TIMBER DECKING

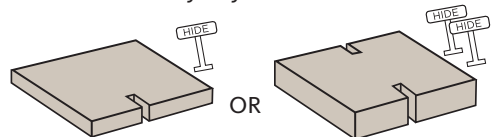


7 MARK UP & CUT KEY-WAY AT CENTER

Ensure key-way is positioned on the tile edge which will be closest to the pool. Check that the key fits the key-way before gluing.



! **NOTE: NOTE NUMBER OF KEYWAYS REQUIRED:** Shallower depth lids require one key-way cut and the thicker depth lids require two key-ways cut at opposite ends of the stone to suit inlay lid. If your kit comes with two keys, cut two key-ways.



10, 20 & 30mm
(0.4", 0.8", & 1.2")

40, 50 & 60mm
(1.6", 2", & 2.5")

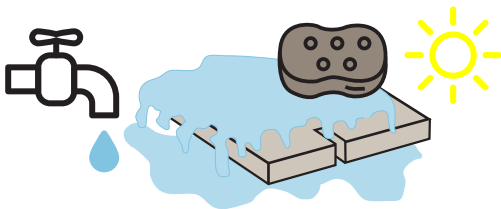
NOTE NUMBER OF KEYWAYS REQUIRED: 10, 20 & 30mm (0.4", 0.8", & 1.2") lids require one keyway cut and
40, 50 & 60mm (1.6", 2.0", & 2.5") lids require two keyways cut at opposite ends of the stone to suit inlay lid.

- 8 CLEAN & DRY** - Failure to complete these steps may result in a weak adhesive bond.

It is also important to clean away tiny fragments of steel left behind from cutting the stone with a saw blade. These steel shavings may rust.



You must insure that stone/tile inlay materials are fully dry before installation, especially in cold weather.

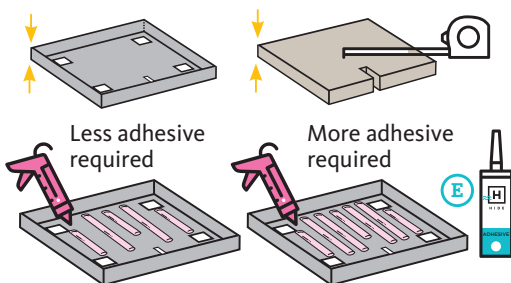


- 9 DETERMINING ADHESIVE QUANTITY AND WHEN TO USE THE HEIGHT ADJUSTER** - To determine how much adhesive is needed when installing the stone into the HIDE Lid, first measure the gap between the underside of the stone and the internal depth of the HIDE Lid. This gap will dictate the amount of adhesive required:

Small gap (1–2mm): Less adhesive is required.

Larger gap (2–3mm): A greater volume of adhesive is needed to fill the space and secure the bond.

If the gap exceeds 3mm, see step **11**

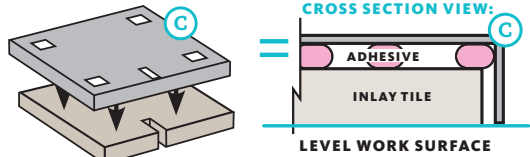


- 10 FLIP INLAY COVER (C) OVER AND PRESS DOWN ONTO INLAY (TILE):**



So that both inlay cover and tile sit upside down flush on a flat surface for 15 minutes to let adhesive stiffen.

Curing time is longer in cold weather



- 11 HEIGHT DIFFERENCE OVER 3MM: (1/8")**

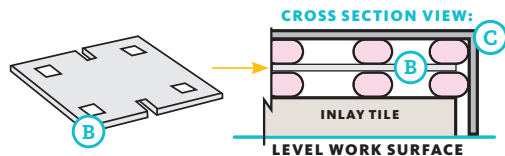
If the gap exceeds 3mm, the Height Adjuster should be used. The Height Adjuster reduces the void by taking up 2mm of space inside the lid.

To calculate TOTAL adhesive to use with the Height Adjuster, remember there will be two lots of adhesive applied ie. adhesive is applied inside the Inlay Cover (C) and the reverse side of the inlay material (tile).

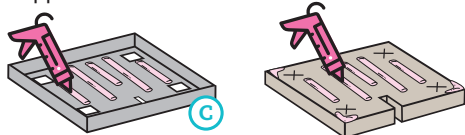
Ensure the adhesive supports each corner of the inlay material above and below the Height Adjuster.

USING THE HEIGHT ADJUSTER (B) SUPPLIED

Adhesive is applied to both sides of the adjuster, which not only reduces the overall adhesive needed but also creates a stronger, more stable bond.



2mm Height Adjuster used allowing for two applications of Adhesive.



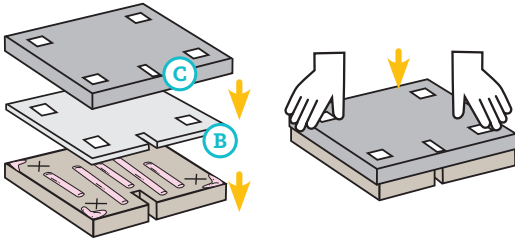
INSTALLING THE INLAY COVER ...CONTINUED

Avoid placing adhesive within 10mm (3/8") of keyway and drainage holes.

Mark their position through the height adjuster with a cross.

Place Height Adjuster on inlay (tile), then flip Inlay Cover (C) over and press down onto Height Adjuster (B)

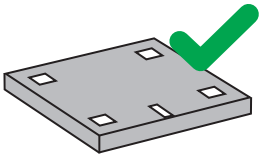
PRESS DOWN FOR A LEVEL FINISH



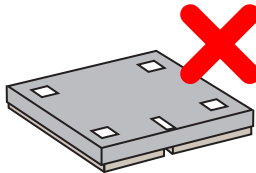
- 12** **WAIT WHILE ADHESIVE STIFFENS**
Time may vary due to temperature and amount of adhesive used.



THEN FLIP RIGHT WAY UP

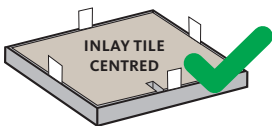


CORRECT FINISH:



WRONG FINISH:

- 13** **CENTER TILE IN THE COVER**
Make sure the glue has stiffened and remains flush with the inlay cover. If required, use tile spacers to center the infill.



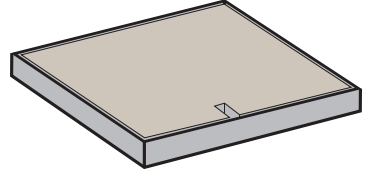
CORRECT FINISH:



WRONG FINISH:

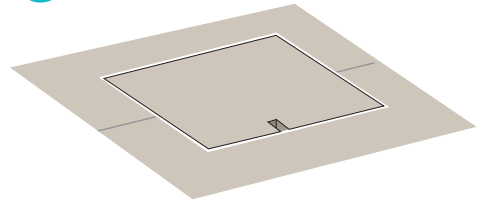
LET ADHESIVE SET - Adhesive should not be used in temperatures below 5°C (41°F) and above 40°C (104°F). Curing time will be affected in harsh environments.

- Curing time is longer in cold weather.
- Cure in the shade in hot weather.

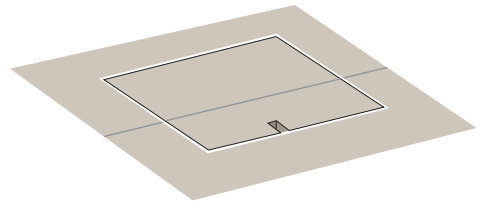


INSTALLATION IS COMPLETE

14



Finished with a solid stone inlay



or finished by cutting the inlay to match surrounding stone

INTRICATE PATTERNS

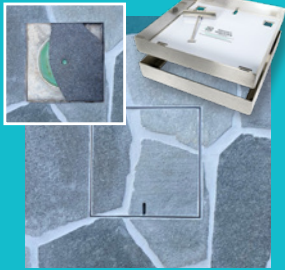




CONCEAL, DON'T REVEAL

SAFE. SEAMLESS. STUNNING.

SKIMMER LIDS



ACCESS COVERS



DRAIN COVERS



CONCRETE INFILL COVERS



Upgrade your exterior specification with these 'fit for purpose' cutting-edge tile inlay systems!



UNITED STATES

C: +1 949 942 4977
E: admin@skimmercovers.com
W: www.skimmercovers.com

PROUDLY MANUFACTURED BY:

SKIMMER LIDS

PTY LTD

@hideskimmerlids

NOTE! If installation varies to Skimmer Lids Pty Ltd recommendations or is used in any way other than specified, warranty and all liabilities will be waived. Skimmer Lids Pty Ltd will not be held responsible for any injuries that may occur.

For further information

Please contact Skimmer Lids for any query. We're happy to chat! +61 7 3807 2551